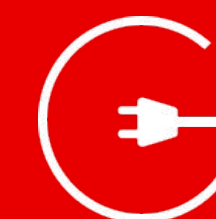


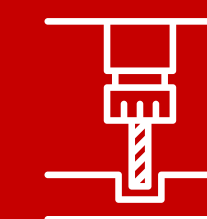
SMT AND THT  
ASSEMBLY  
SERVICES



WIRE  
HARNESSES  
PRODUCTION



ELECTRONIC  
DEVICES  
PRODUCTION



CNC  
MILLING

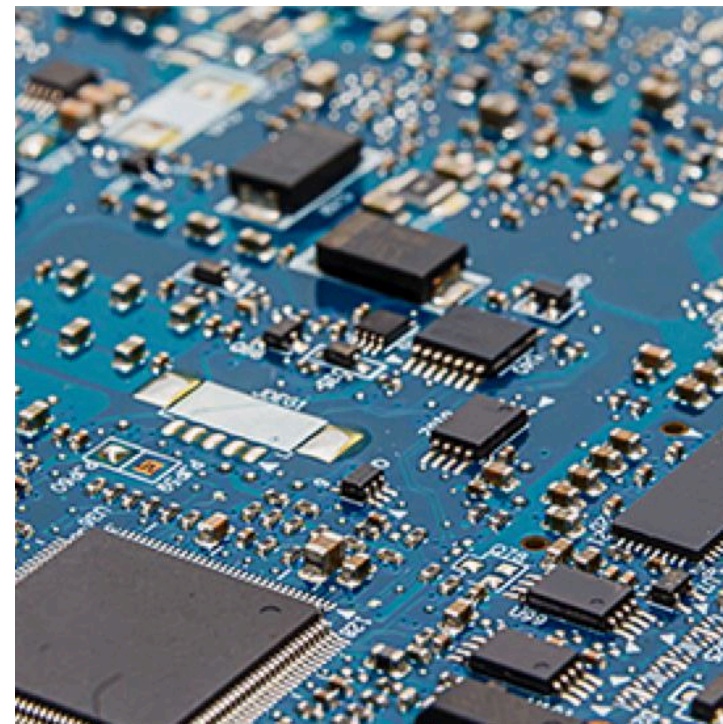
## We are a modern and dynamically developing EMS provider.

Our main domain is rendering of SMT and THT assembly services using fully automatic production lines and moreover high-end manually operated soldering stations for through-hole mounted components. Our other services consist of programming, testing, applying protective coatings and finished product assembly. We also render services of manufacturing wiring harnesses using fully automatic wire processing machines for cutting, stripping and crimping and manual labour for finished harness building.

## Mission and Vision

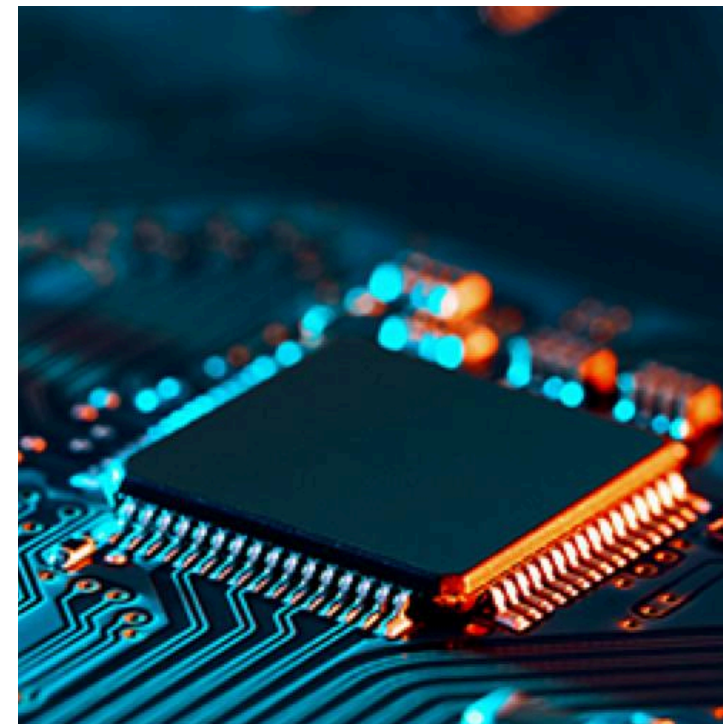
Based on our knowledge and experience, we provide our clients the means to deliver innovative electronic solutions to the world, creating a better, brighter future. For all of us. Every day we take up challenges and set our goals a little bit further, to improve the quality of our services and meet each and every requirement of our clients. We strive to cultivate a culture of constant improvement through optimizations in every department of the company. We learn and develop our competencies and skills through cooperation with clients from various industries, which allows us to face increasingly more demanding projects. We strive to expand the range of our services to become a comprehensive provider for our clients. We want to offer a broad spectrum of services to help our clients to reduce the logistics necessary for finishing their projects.

# Our services



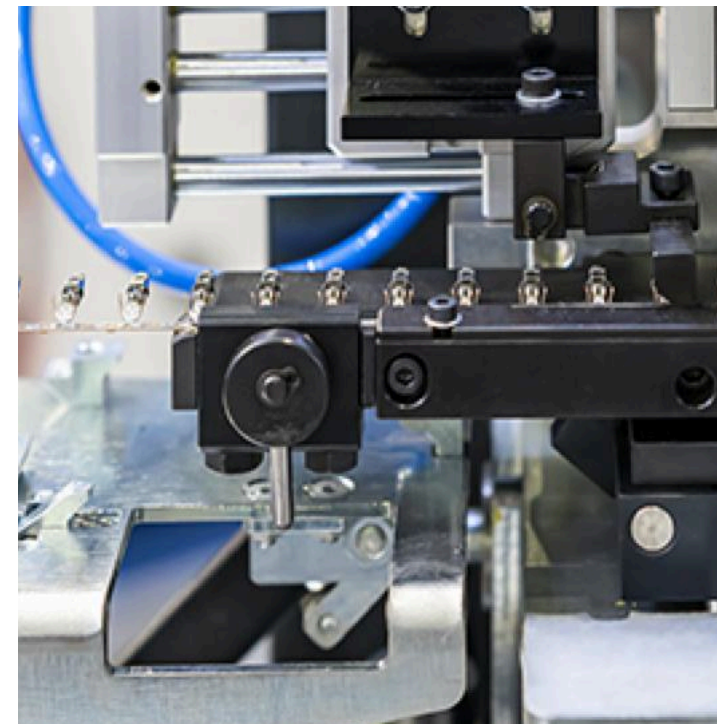
## ELECTRONICS ASSEMBLY

- SMT assembly
- THT assembly
- THT manual assembly
- AOI 3D inspection



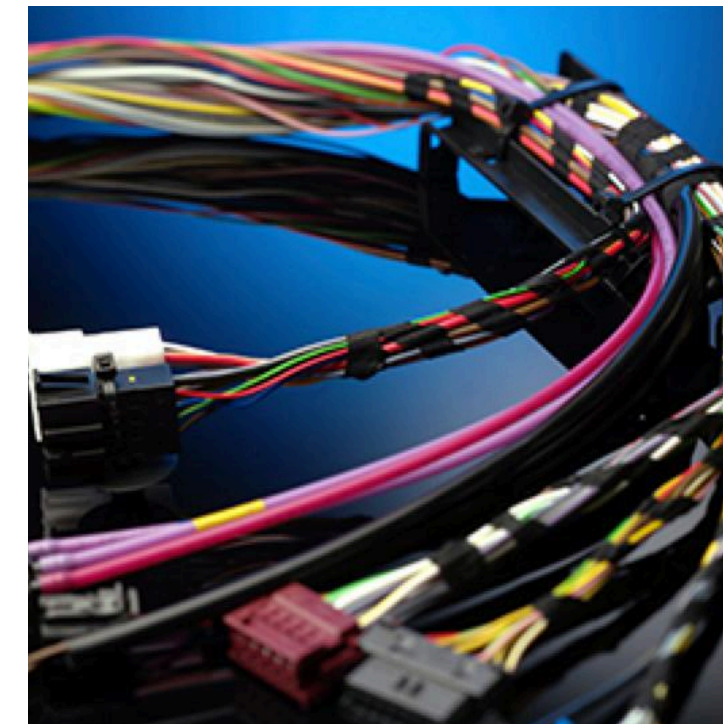
## ADDITIONAL SERVICES

- Cleaning of electronic circuits
- Automated conformal coating
- Uploading software to microcontrollers
- Functional tests according to the clients specifications



## WIRE CUTTING AND STRIPPING

- Wire cutting to client's specification
- Wire stripping
- Ability to crimp most of the market available terminals and connectors
- Tinning



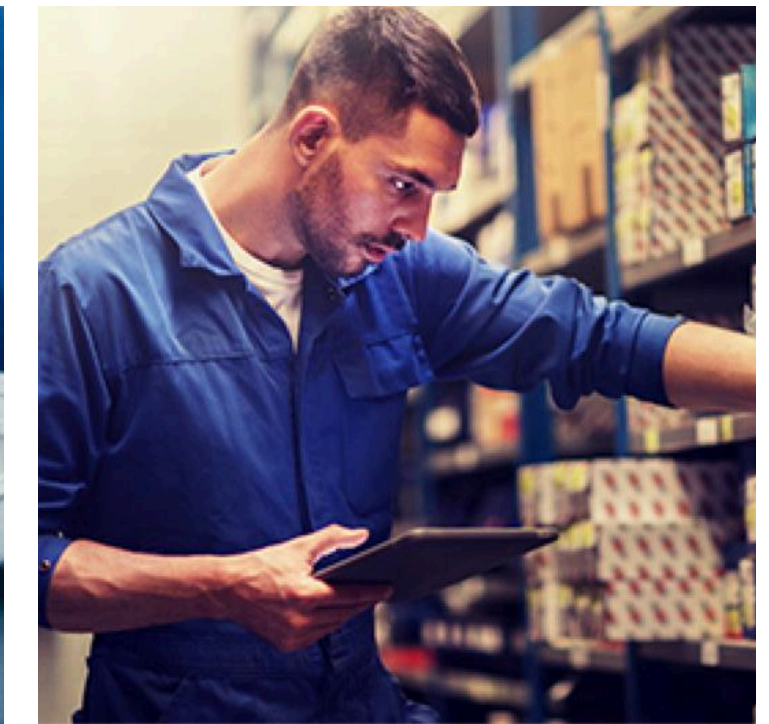
## PRODUCTION OF CABLE HARNESES

- Building custom wiring harnesses
- Electrical tests
- Cable and wire marking
- Cable confection



## FINAL ASSEMBLY OF COMPLETE DEVICES

- Mounting PCBs and wire harnesses in cases/housings
- Assembly of displays, fans etc.
- Mechanical processing of housings
- Packing finished device with any additional parts etc. for the end-user



## MATERIALS MANAGEMENT

- Purchase of PCBs
- Purchase of components specified by the client
- Keeping stock of components specified by clients
- Global sourcing of components and material

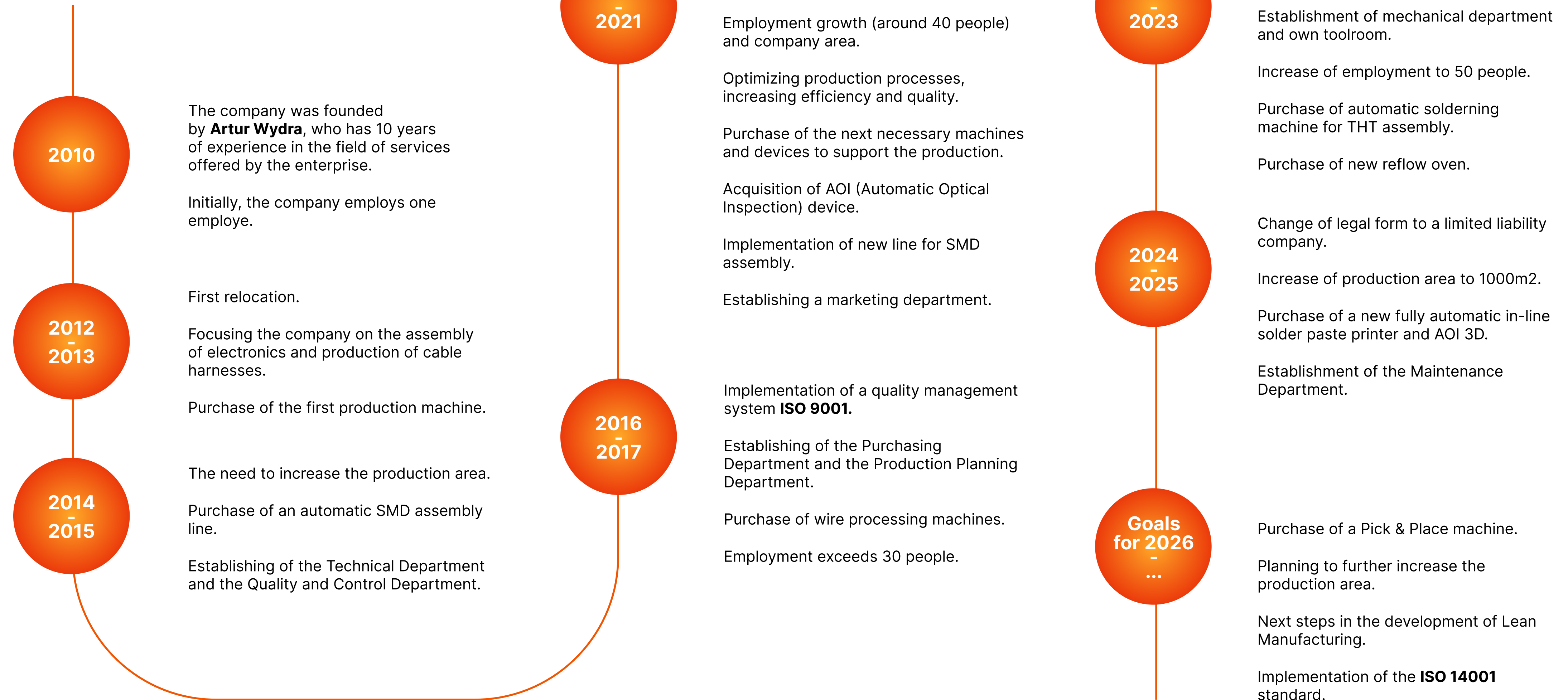
## Forms of cooperation:

Material purchased by WDR Elektro of cooperation

Material provided by the customer

Possibility to keep the agreed stock of components in stock

## Historical overview





### Fully automatic in-line solder paste printer JUKI G-TITAN

- Full automatic
- Repeatability: +/- 18 um
- Maximum print format: up to 460x460 mm
- Automatic stencil cleaning



### High-speed precise SMD placers (Pick&Place machines) P&P JUKI KE 2050 (chip shooter) JUKI KE 2060

- Efficiency: up to 300 000 placed components per day
- Capable of using up to 160 8mm feeders at once
- Optical and laser measurements
- Min. size of components: 0201
- Min. lead pitch of components: 0,4 mm



### Reflow Soldering Oven JUKI RS 800

- 8-zone heating (heating zones length 3120 mm)
- 2-zone cooling (cooling zones length 800 mm)
- Temperature range 20-300 degrees



### 3D AOI CyberOptics SQ3000

- Test performance: 50cm2/s
- Resolution for the X/Y axis: 7 µm
- Resolution for the Z axis: 1 µm
- The ability to control circuits with maximum dimensions: 510x510 mm
- The ability to control ready circuits and apply paste



### PVA DELTA 6 - a fully automated system for selective coating and potting.

- Repeatability ±25 µm, resolution 5 µm
- Three-axis motion system
- Capability of applying pastes and adhesives



### Selective soldering – Ersa ECOSELECT 1

- Two soldering heads capable of soldering using two types of alloys
- Precise fluxing module
- Option to preheat the PCB on both sides
- Possibility of soldering panels up to 508 x 508 mm in size
- Capacity up to 600,000 soldering points per month



### Soldering stations from reputable provider JBC

- 130 W
- Temperature tolerance +/- 2° C



### Programming, testing and service stations

- Programming components and modules with dedicated tools
- Test and inspections in accordance with client's specifications
- Detection and elimination of any non-conformities

## Machine Park [milling]



### CNC milling machine – CROMACHINE MR400

Spindle 2.2 kW, CNC milling area is 433 mm x 248 mm x 200 mm  
Milling materials:

- Plastics (PEHD, LDPE, PC, PMMA)
- Wood and wood-based materials (MDF, chipboard, plywood)
- Metals (Steel, aluminum, brass, bronze)



### Automatic wire processing machine Kodera C550SZTSe

- Actual capacity of up to 60 000 cables per day
- Automatic crimping of terminals on one side of the cable
- Automatic twisting of copper wires and tinning on the other side of the cable
- 100% force control of each crimp
- Adapted to thin wires from 0.03mm<sup>2</sup> (AWG 32) and small rasters of connectors from 1mm



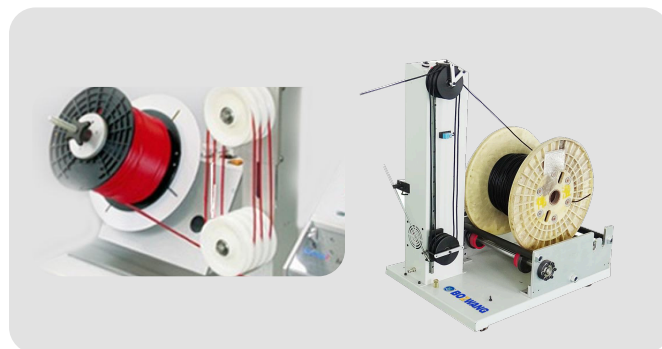
### Automatic wire processing machine Kodera C551SZ

- Actual capacity of up to 60 000 cables per day
- Automatic crimping of terminals on both sides of the wires
- 100% force control of each crimp
- Adapted to thin wires from 0.03mm<sup>2</sup> (AWG 32) and small rasters of connectors from 1mm



### Automatic cutting and stripping machines Kodera Casting C351 and SchleunigerMultiStrip 9480

- Total efficiency: 100 000 wires cut and stripped per day
- Min. wire gauge/cross-section: AWG 28 /0,08mm<sup>2</sup>
- Max. wire gauge/cross-section: AWG 6 /16mm<sup>2</sup>
- Ability to cut and strip multi wired cables



### KOMAX ADS115 and BOZWANG BZW-F12 (automatic cable feeder)

- Active, compact system for smooth cable feeding, with an electric drive
- Cable feeding at a speed of up to 3m/s
- Improved quality of wire cutting (complete elimination of jerks on cutting machines)



### Cosmic 927R for wire stripping

- Outside diameter of the conductor: 0.25mm-5.3mm
- Wire cross-section: AWG36-10
- Partial/full pull-off length: 2-25mm



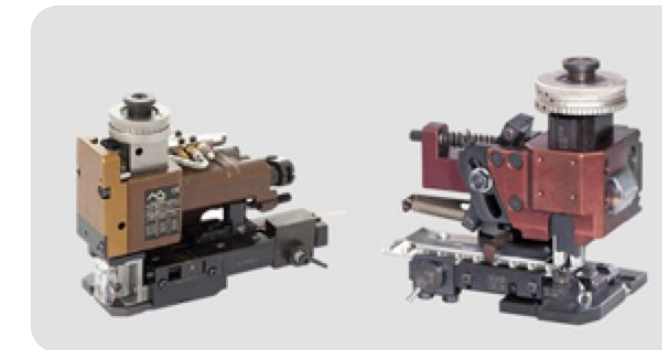
### Komax Mira 32 and BOZWANG BZWF2.0- (wire Stripping Machine for 0.03-2.08 mm<sup>2</sup> Conductors, designed for precise insulation removal)

- Compact model for stripping cables with electrical control
- Isolation of wires with cross-sections 0.03-3.3 mm<sup>2</sup> (AWG 32-12)
- Total stripping length 1-25 mm
- Partial stripping length 2-25 mm
- Cycle time approx. 0.3 s



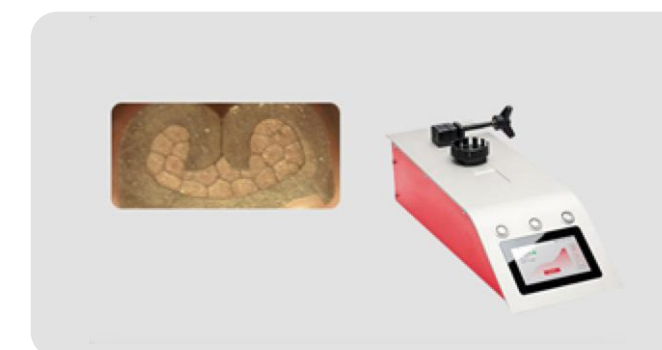
### Printer - Hitachi Ink Jet UX Series

- Possibility to print any content on the entire cable (repeating the content every few cm)
- Inkjet printer - does not interfere with insulation
- Black ink
- Print height 2-10 mm



### Applicators for terminals (more than 50 pcst) Mecal, Tyco, Hanke

- Side and rear-loaded
- Ability to crimp most of the terminals and connectors available at the market



### Quality control RED PT110 - Motorized pull tester and crimp cross-section analysis station

- Thorough record of performed tests
- Tolerance: 0,5%
- Ability to measure up to 1000 N tensile strength



### Bench presses: Electric (Mecal TT Schafer EPS2000), Pneumatic (WDT UP35)

- Cross-section range up to 100 mm<sup>2</sup>
- Breaking forces up to 35 kN
- Ability to crimp larger terminals available on the market

## Why WDR Elektro?



We make it personal. We endeavour to work hand in hand with our clients to assure their success.

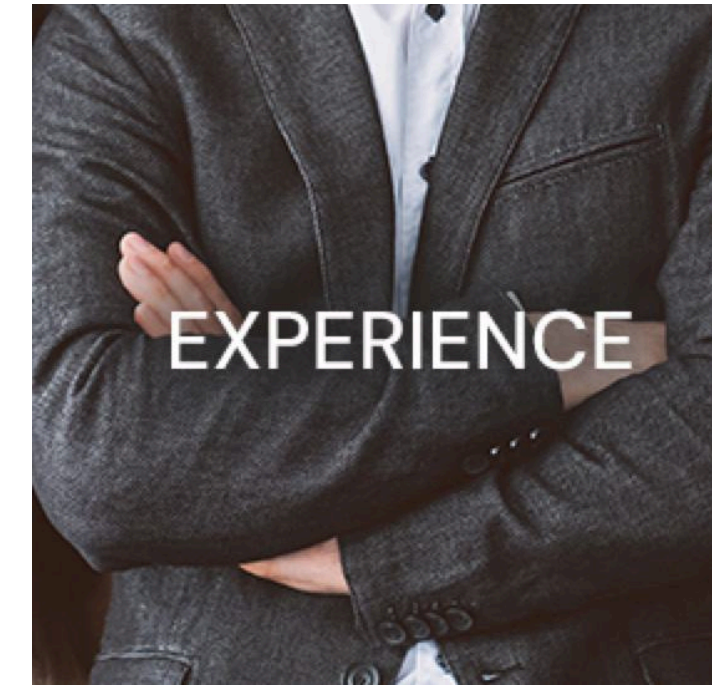


We are medium-sized, which allows us to combine flexibility with capacity for medium-to-large scale production.



We have dedicated teams, that get involved and care about our client's success:

- Technology department
- Quality control department
- Mechanical processing department
- Purchasing department
- Production planning department
- Sales and marketing department
- Maintenance department



Our employees are knowledgeable and have years of experience working for the EMS, wire harnesses industry. Moreover, the strength of the team is its diversity. Employees are eager to share their knowledge and experience from other fields.



We focus on the implementation of Lean Manufacturing principles



# PN-EN ISO 9001:2015

WDR Elektro maintains a Quality Management System implemented in accordance with PN-EN ISO 9001:2015, which provides a framework for creating procedures and standards of operation.

**We have over 15 years of experience in industries such as:**



**Automotive**



**Smart home**



**Lighting**



**Home security**



**Industrial  
processes  
automation**



**Building  
automation**



**Photovoltaic**



**Medical  
industry**



**Military industry**

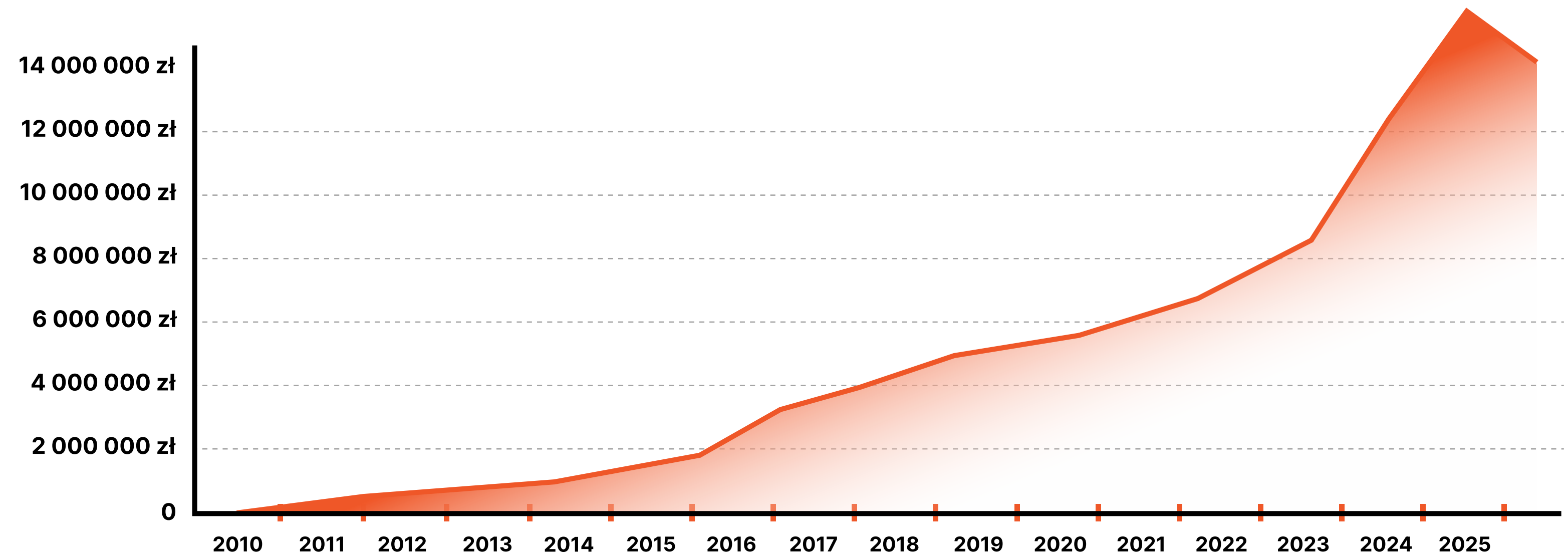
**And various other**

- We continuously invest in our employees, ensuring a competent and skilled workforce.
- Whether it is a single production or a long-term job, we are interested in Your project.
- We guarantee high-quality services and timely deliveries at a competitive price.
- To ensure reliability we have implemented ISO 9001 quality management system.

## Graphs of increases in company indicator.

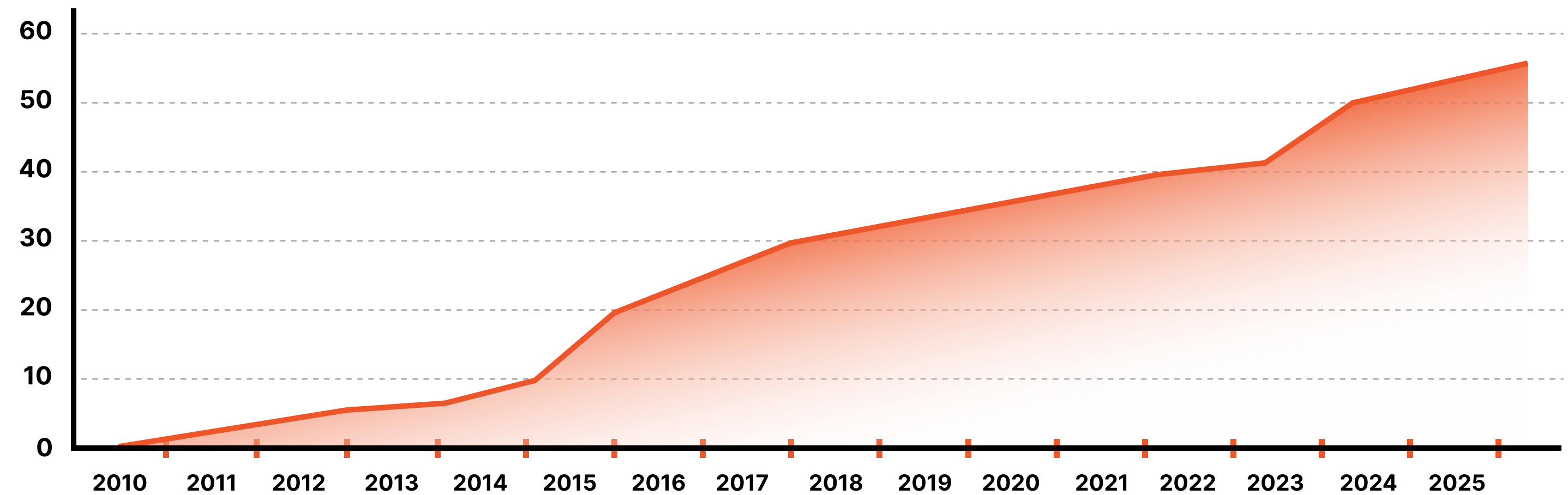
### Turnover:

Year 2025 – 13 mln PLN



### The employment

Year 2026 – 55 people



# Contact

## WDR ELEKTRO Sp z o.o.

Christo Botewa 6 street  
30-798 Kraków

**Phone:** +48 505 146 428  
+48 509 012 000

**E-mail:** office@wdre.pl  
quotations@wdre.pl

